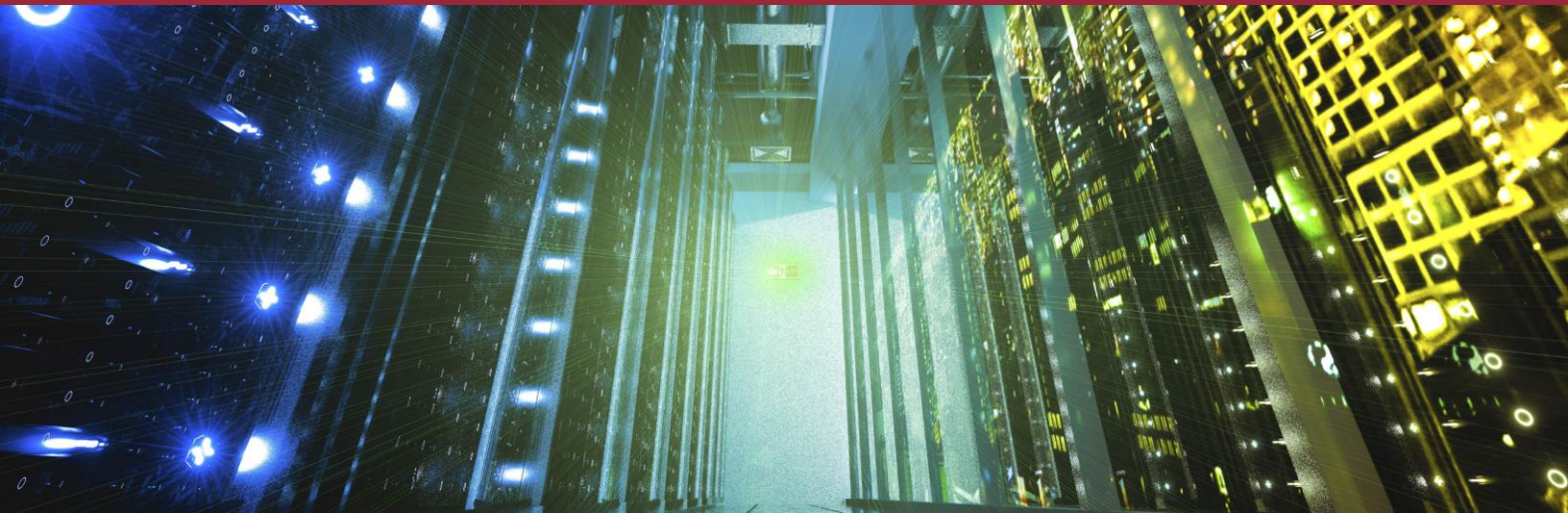


XMU+ Technical Specifications



Large and Small Chassis:

Audio Inputs:

- Handset: 220 ohms
- Tape: 10K ohms (1/4" phone jack)
- Remote access jack (analog line 2500 set)

Audio Storage:

- Voice encoding/decoding
- Pulse code modulation (PCM)
- Storage medium: SDRAM and FLASH

Storage rate:

- 8 kHz x 8 bit bytes/sec (64K digital bandwidth)
- Frequency response: 200 Hz to 3.4 kHz
- From 8 minutes to 6 hours of recording time

Alarm Contacts:

- 2 output contacts
- 1 input contact

Communications Ports:

- 1 RS-232 port
- 1 TCP/IP port
- 1 Modem port

Number of Ports:

XMU+ large chassis:

- 2 to 64 analog ports
- 30 or 60 E1 digital ports

XMU+ small chassis:

- 2 to 8 analog ports
- 30 E1 digital ports



XMU+ Large Chassis Rear Panel

Administration Software

- Windows 98, NT, ME, 2000 or XP
- Support for .wav files
- Remotely manage 1000 XMU+ units
- Download configurations via windows

MOH Line Card:

- 4 outputs
- Maximum 2 MOH cards with 8 ohm interface
- Maximum 4 MOH cards with 600 ohm interface

Hybrid Analog Line Card:

- 2, 4, 6 or 8 ports
- 2 to 64 ports on Large XMU+
- 2 to 8 ports on Small XMU+
- Connector: Female RJ21X
- Ring detection: loop or ground start
- E&M signaling
- Continuous play
- Output level: adjustable to a maximum -9 dBm
- Offhook impedance: 600 ohm nominal



interalia[®]

Delivering Messages: Simply. Clearly. Reliably.

Large and Small Chassis:

Messages:

- 999 messages per partition
- Messages cannot exceed total recording time

Power Supply:

- 110/240 VAC, 1.0/0.5 A, 60/50 Hz, 120 W
- -48 VDC, 2.5 A, 120 W

Approvals:

- FCC, CS-03, NRTL/C, CE

Dimensions:

- Large: 7 in. (17.5 cm) Height x 17.5 in. (44 cm) Width x 12 in. (31 cm) Depth
- Small: 1.75 in. (4.38 cm) Height x 17.5 in. (44 cm) Width x 12 in. (31 cm) Depth



XMU+ Small Chassis Rear Panel

E1 Digital Line Card

- E1 (MELCAS) interface (30 ports per card)
- 2 cards (60 ports) maximum on Large XMU+
- 1 card (30 ports) maximum on Small XMU+
- Connector: RJ45 and dual P43/E1 (BT43) coaxial
- Line length: 0-1000 ft.
- "Hookflash" call transfer
- DTMF caller interaction
- Impedance: 120 or 75 ohm
- (strappable)

Questions? Visit www.interalia.com or contact us at:

Canada

6815 8th Street NE
Calgary, AB T2E 7H7
Phone: (403) 288-2706
Toll Free: (800) 661-9406
Fax: (403) 288-5935
Email: info@interalia.com

United States

701 24th Ave SE
Minneapolis, MN 55414
Phone: (403) 288-2706
Toll Free: (800) 661-9406
Email: info@interalia.com

United Kingdom

58 Herschel Street
Slough
SL1 1HD
United Kingdom
Phone: +44 (203) 6082606
Email: info@interalia.com



Delivering Messages: Simply. Clearly. Reliably.